

## pressure gauges “solid-front” turret case DS 4.5” (125mm)



These instruments are built in accordance with safety specifications ASME B40.1, UNI-EN 837-2.

The safety construction consists of a stainless steel “solid-front” safety cell placed behind the scale, which welding to socket gives to instrument an exceptional strength. Whenever, due to leaks, an internal pressure is created or the elastic element is broken the safety cell protects the front and sides, meanwhile the blow out back is released from the case. They are designed for use in chemical, petrochemical, conventional power plants. The dampened movement make them particularly suitable in presence of high vibrations and pulsating pressure.

### 1.30.X.A - Standard Model - Lower Connection

**Design:** ASME B40.1

**Ranges:** from 0...30 to 0...15000 psi; (from 0...2,5 to 0...1000 bar or other equivalent units).

**Accuracy:** Grade 2A as per ASME B40.1 ( $\pm 0,5\%$  of span).

**Ambient temperature:** -13...+149°F (-25...+65°C).

**Process fluid temperature:** -22...302°F (-30...+150°C max).

**Working pressure:** max 75% of FSV.

**Overpressure:** (temporary): 30% of FSV.

**Protection degree:** IP 65 as per EN 60529/IEC 529.

**Socket material:** AISI 316 L.

**Elastic element:** AISI 316L seamless tube.

**Case and blow out disk:** polyamide, fiberglass reinforced, UV ray stabilized.

**Ring:** polypropylene, fiberglass reinforced.

**Safety cell:** AISI 304 st.st.

**Window:** tempered glass.

**Movement:** stainless steel, dampened.

**Dial:** aluminium, white with black markings.

**Pointer:** aluminium, micrometric adjustable.

### 1.30.X.D - Standard Model - Back Connection

**Protection degree:** IP 65 as per EN 60529/IEC 529.

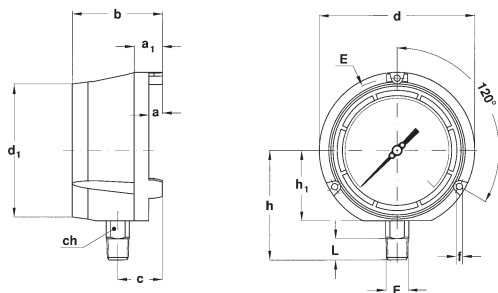
**Case:** phenolic resin.

**Ring and blow out disk:** polypropylene, fiberglass reinforced.

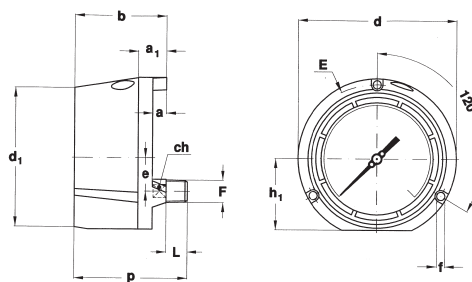
**Separating wall:** AISI 304 st.st.

**Safety cell:** not available.

**Other features:** as lower connection.



**A - LOWER CONNECTION**



**D - BACK CONNECTION**

Mounting	F	a	a <sub>1</sub>	b	c	d	d <sub>1</sub>	e	E	f	h	h <sub>1</sub>	ch	p	L	Weight (1)
Lower	23M-1/4-18 NPT	0.51"	1.06"	3.38"	1.65"	5.82"	4.96"		5.39"	0.25"	4.07"	2.61"	0.86"		0.78"	1.78 lbs
	43M-1/2-14 NPT	(13)	(27)	(86)	(42)	(148)	(126)		(137)	(6,5)	(103,5)	(66,5)	(22)		(20)	(0,81 kg)
Back	23M-1/4-18 NPT	0.51"	1.06"	3.38"		5.82"	5.07"	1.22"		0.23"		2.61"	0.66"	4.17"	0.78"	2.20 lbs
	43M-1/2-14 NPT	(13)	(27)	(86)		(148)	(129)	(31)		(6)		(66,5)	(17)	(106)	(20)	(1,0 kg)

dimensions : inches (mm)

## OPTIONS

<b>F11</b> - Panel mounting Kit
<b>T01</b> - Tropicalization
<b>T25</b> - AISI 316 st.st. label
<b>T32</b> - Safety glass window

## "HOW TO ORDER" SEQUENCE

Section / Model / Case / Mounting / Diameter / Range / Process connection / Options  
**1 30 X A F 23M F11...T32**  
**D 43M**