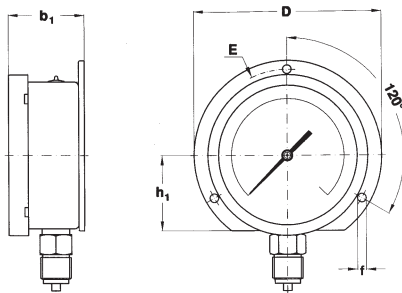


bourdon tube pressure gauges : mounting back flange lower connection pressure gauges

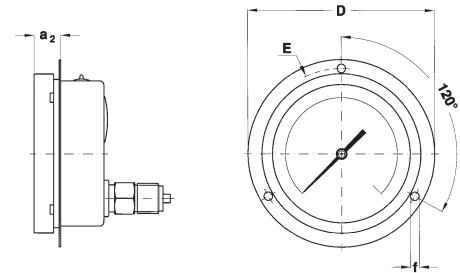
Model	DS	b_1	h_1	E	D	f
MGS10	2.5 (63)	1.34 (34)	1.36 (34,5)	2.95 (75)	3.35 (85)	0.14 (3,6)
MGS18	2.5 (63)	1.48 (37,5) (1)	1.36 (34,5)	2.95 (75)	3.35 (85)	0.14 (3,6)
MS4-MGS44	4 (100)	1.49 (38)	2.05 (52)	4.57...4.72 (116...120)	5.12 (130)	0.24 (6)
MGS10-18-19-36	4 (100)	2.07 (52,5)	2.05 (52)	4.57...4.72 (116...120)	5.12 (130)	0.24 (6)
MGS20-21-40	4 (100)	2.85 (72,5)	-	4.57...4.72 (116...120)	5.20 (132)	0.24 (6)
MN14/10-18	4 (100)	2.07 (52,5)	2.05 (52)	4.57...4.72 (116...120)	5.12 (130)	0.24 (6)
MCE10-18	4 (100)	3.01...3.41 (76,5...86,5)	2.05 (52)	4.57...4.72 (116...120)	5.12 (130)	0.24 (6)
MGS72-74	4 (100)	2.07 (52,5)	2.05 (52)	4.57...4.72 (116...120)	5.12 (130)	0.24 (6)
MS1	6 (150)	2.13 (54)	3.35 (85)	6.61...7.01 (168...178)	7.48 (190)	0.24 (6)
MGS18-19-36	6 (150)	2.13 (54)	3.35 (85)	6.61...7.01 (168...178)	7.48 (190)	0.24 (6)
MGS20-21-40	6 (150)	2.97 (75,5)	3.35 (85)	6.61...7.01 (168...178)	7.48 (190)	0.24 (6)
MN15	6 (150)	2.13 (54)	3.35 (85)	6.61...7.01 (168...178)	7.48 (190)	0.24 (6)
MN16-17	6 (150)	2.97 (75,5)	3.35 (85)	6.61...7.01 (168...178)	7.48 (190)	0.24 (6)
MN25	6 (150)	-	3.35 (85)	6.61...7.01 (168...178)	7.48 (190)	0.24 (6)
MN14/10-18	6 (150)	2.13 (54)	3.35 (85)	6.61...7.01 (168...178)	7.48 (190)	0.24 (6)
MCE20	6 (150)	5.49 (139,5)	3.35 (85)	6.61...7.01 (168...178)	7.48 (190)	0.24 (6)

dimensions : inches (mm)

(1) 1.32 (33,5) with crimped ring
(2) 0.61 (15,5) with crimped ring



C - BACK FLANGE,
for lower connection



E - FRONT FLANGE,
for back connection

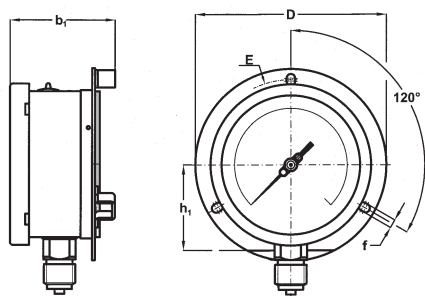
front flange back connection pressure gauges

Model	DS	a_2	E	D	f
MGS10	2.5 (63)	0.26 (6,6)	2.95 (75)	3.35 (85)	0.14 (3,6)
MGS18	2.5 (63)	0.26 (6,6)	2.95 (75)	3.35 (85)	0.14 (3,6)
MGS20	2.5 (63)	0.45 (11,5)	2.95 (75)	3.35 (85)	0.14 (3,6)
MS4 - MGS44	4 (100)	0.71 (18)	4.57...4.72 (116...120)	5.20 (132)	0.24 (6)
MGS10	4 (100)	0.79 (20)	4.57...4.72 (116...120)	5.20 (132)	0.24 (6)
MGS18-19-36	4 (100)	0.79 (20)	4.57...4.72 (116...120)	5.20 (132)	0.24 (6)
MGS20-21-40	4 (100)	0.79 (20)	4.57...4.72 (116...120)	5.20 (132)	0.24 (6)
MN14/10-18	4 (100)	0.79 (20)	4.57...4.72 (116...120)	5.20 (132)	0.24 (6)
MCE10-18	4 (100)	0.79 (20)	4.57...4.72 (116...120)	5.20 (132)	0.24 (6)
MGS72-74	4 (100)	0.79 (20)	4.57...4.72 (116...120)	5.20 (132)	0.24 (6)
MGS18-19-36	6 (150)	1 (25,5)	6.61...7.01 (168...178)	7.48 (190)	0.24 (6)
MGS20-21-40	6 (150)	1 (25,5)	6.61...7.01 (168...178)	7.48 (190)	0.24 (6)
MN15	6 (150)	1 (25,5)	6.61...7.01 (168...178)	7.48 (190)	0.24 (6)
MN16-17	6 (150)	1 (25,5)	6.61...7.01 (168...178)	7.48 (190)	0.24 (6)
MN25	6 (150)	1 (25,5)	6.61...7.01 (168...178)	7.48 (190)	0.24 (6)
MN14/10-18	4 (100)	0.79 (20)	4.57...4.72 (116...120)	5.20 (132)	0.24 (6)

dimensions : inches (mm)

bourdon tube pressure gauges : mounting

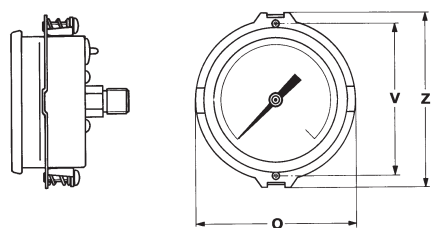
back flange lower connection for solid-front pressure gauges



C - BACK FLANGE,
for lower connection

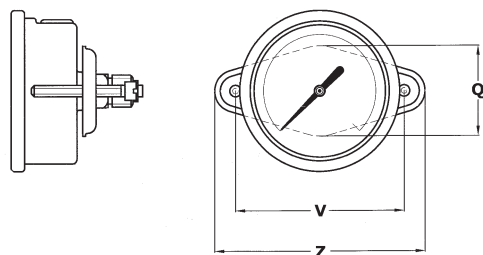
Model	DS	b ₁	h ₁	f	D	E
MGS20-21-40	4 (100)	2.85 (72,5)	-	0.24 (6)	5.19 (132)	4.56...4.72 (116...120)
MGS20-21-40	6 (150)	2.85 (72,5)	3.34 (85)	0.24 (6)	7.48 (190)	6.61...7.00 (168...178)

clamp back connection pressure gauges



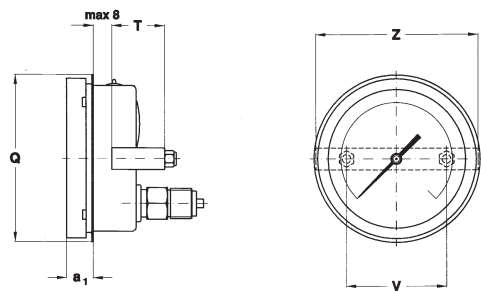
Model	DS	Q	Z	V
MS1, MGS10-18	2 (50)	2.46 (62,6)	2.66 (67,5)	2.30 (58,5)

dimensions : inches (mm)



Model	DS	Q	Z	V
MGS10-18	2.5 (63)	1.50 (38)	3.54 (90)	2.83 (72)

dimensions : inches (mm)



B - "U" CLAMP,
for back connection

Model	DS	Q	a ₁	T	Z	V
MS4	4 (100)	---	---	1.2 (30,5)	4.41 (112)	2.76 (70)
MGS10-18-19-36	4 (100)	4.41 (112)	0.79 (20)	1.63 (41,5)	4.41 (112)	2.76 (70)
MN14/10-18	4 (100)	4.41 (112)	0.79 (20)	1.63 (41,5)	4.41 (112)	2.76 (70)
MGS72-74	4 (100)	4.41 (112)	0.79 (20)	1.63 (41,5)	4.41 (112)	2.76 (70)
MS1	6 (150)	6.46 (164)	0.81 (20,5)	1.63 (41,5)	6.10 (155)	4.17 (106)
MGS18-19-36	6 (150)	6.46 (164)	0.81 (20,5)	1.63 (41,5)	6.10 (155)	4.17 (106)
MN15	6 (150)	6.46 (164)	0.81 (20,5)	1.63 (41,5)	6.10 (155)	4.17 (106)
MN14/10-18	6 (150)	6.46 (164)	0.81 (20,5)	1.63 (41,5)	6.10 (155)	4.17 (106)

dimensions : inches (mm)

Copyright © Nuova Fima srl. All rights reserved. Any part of this publication should not be reproduced without a written Nuova Fima's srl approval