

**intrinsically safe pressure transmitter,
for food industry and sanitary applications,
ATEX version,
accuracy 0,5 %**



74-07

Authorization NO. 1599

Certificate :
0425 ATEX 2635-01



II 1G Ex ia IIC T6...T4 Ga
II 1D Ex ia IIIC T₂₀₀85°C...T₂₀₀135°C Da
II 1/2G Ex ia IIC T6...T4 Ga/Gb
II 1/2D Ex ia IIIC T₂₀₀85°C...T₂₀₀135°C Da/Db

Compliance to requirements of directives: ATEX 2014/34/EU - EMC 2014/30/EU - PED 2014/68/EU - RoHS 2011/65/CE

8.XSA

Protection type: intrinsic safety "ia" as per EN 60079-0, EN 60079-11.

Marking:

- II 1 G Ex ia IIC T6...T4 Ga

II 1 D Ex ia IIIC T₂₀₀85°C...T₂₀₀135°C Da (Cod. **G1D**) ⁽¹⁾;

- II 1/2 G Ex ia IIC T6...T4 Ga/Gb

II 1/2 D Ex ia IIIC T₂₀₀85°C...T₂₀₀135°C Da/Db (Cod. **G2D**).

Measuring ranges: 0...0,6/0...40 bar, relative; -1...0/-1...+24 bar, relative.

Output signal: 4...20 mA.

Non-linearity (BFSL): ≤ ± 0,25 % of the range, according to IEC 61298-2.

Non-repeatability: ≤ 0,15 % of the range, according to IEC 61298-2.

Accuracy: ≤ ± 0,5% of the range ⁽²⁾.

Long term drift: ≤ 0,2 % of span.

Zero and span adjustment: ± 10 % span typical.

Stocking temperature: -10...+80 °C.

Response time: <4 ms (measuring); <150 ms (switching on).

Emission and immunity: according to EN 61326-1, (group 1 - class B; industrial applications).

Vibration resistance: 20g (10...2000 Hz, according to IEC 60068-2-6).

Shock resistance: 40g (6 ms, according to IEC 60068-2-27).

Sensor: ceramic in Al₂O₃ or piezoresistive.

Seal fill: oil for food service (FDA).

Case: in AISI 316L, vented up to 16 bar.

Protection degree: IP 65/68 according to IEC 60529 ⁽³⁾.

Diaphragm and process connection: in AISI 316L.

Ranges bar, relative ⁽¹⁾	Overpressure bar, relative	Thermal drift % span / °C ⁽²⁾
0...0,6	1,8	0,05
0...1	2	0,04
0...1,6	3,2	0,03
0...2,5	5	0,02
0...4	5	0,02
0...6	12	0,02
0...10	20	0,02
0...16	32	0,02
0...25	50	0,02
0...40	60	0,02

(1) Different units of measurement, intermediate ranges, vacuum and compound ranges available upon request.

(2) Thermal drift on connection DIN 11851 DN40F.

(1) available with IP 68 metallic cable gland only;

(2) max measuring error according to IEC 61298-2, including non-linearity and hysteresis (limit-point calibration and reference conditions according to IEC 61298-1); accuracy ≤ ± 0,75% of span for measuring range 0...1 bar

(3) depending on the electrical connection

**intrinsically safe pressure transmitter for food industry and sanitary application,
ATEX version, accuracy 0,5 %**

SX SA

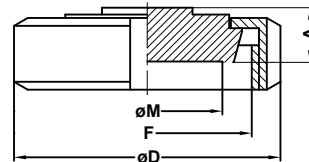
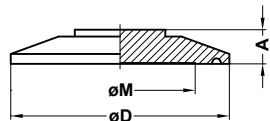
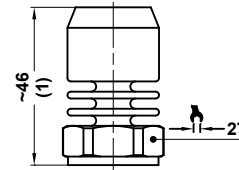
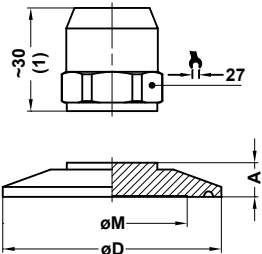
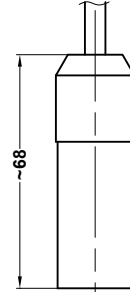
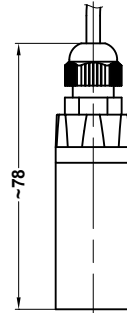
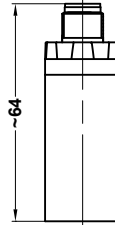
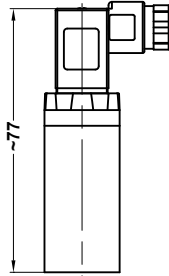
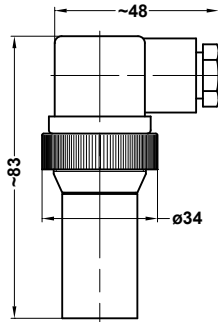
EN 175301-803 (Ex DIN 43650)
IP 65 (standard)

EN 175301-803 Form C
(Ex DIN 43650)
IP 65

M 12
IP 65

Cable exit
IP 65

Cable exit
IP 68



(1) for pressures ≤ 1,6 bar add 5 mm

Standards	DN	A	øD	øM
AT0 ISO 2852 (clamp) (2)	1" 1/2	0.39 (10)	1.98 (50,5)	1.18 (30)
BT0 ISO 2852 (clamp) (2)	2"	0.39 (10)	2.51 (64)	1.57 (40)
DT0 ISO 2852 (clamp) (2)	2" 1/2	0.4 (12)	3.05 (77,5)	1.96 (50)

Standards	DN	A	øD	øM	F
QHF DIN 11851 F (1) (3)	25	0.62 (16)	2.48 (63)	1.18 (30)	Rd 52 x 1/6
SHF DIN 11851 F (1) (3)	40	0.62 (16)	3.07 (78)	1.57 (40)	Rd 65 x 1/6
THF DIN 11851 F (1) (3)	50	0.62 (16)	3.62 (92)	1.96 (50)	Rd 78 x 1/6

dimensions : inches (mm)

(1) Execution without roller available upon request: pls. contact our Technical Department.

(2) Execution with clamp, gasket and connection to be welded available on request: pls. contact our Technical Department.

(3) to be installed with gasket from Siersema Componenten System (S.K.S.) B.V.

Electrical features	
N. of wires	2
Load (Ohm)	$R_L \leq (U_i - 10)/0,02$
Supply (U _i)	10...30
Max current (I _i)	≤ 100 mA
Max power (P _i)	1,0 W
Capacitance (C _i)	19 nF
Inductivity (L _i)	0 mH

WIRING

	DIN 175301-803 A	M12	Cable exit
Supply connection: U+	1	1	brown
Negative connection: U-	2	3	white
Output signal: S+	-	-	-
Ground	GND	2	grey

OPTIONS

Classification	
---	Junction box IP 65, as per EN 175301-803 Form A
SCC	Junction box IP 65, as per EN 175301-803 Form C (1)
M12	Junction box IP 65, M12 x 1 (1)
PVC	Cable exit IP 65, with PVC cable (1)
U68	Cable exit IP 68, with vented polyurethane cable (1)

(1) Zero calibration not available

“HOW TO ORDER” SEQUENCE

Section / Model / Range / Process connection / Output signal / Classification / Temperature / Options

8 XSA BIM...DT0 1 G1D --- SCC... U68
QHF...THF G2D

