

# BULK FLOW MONITOR

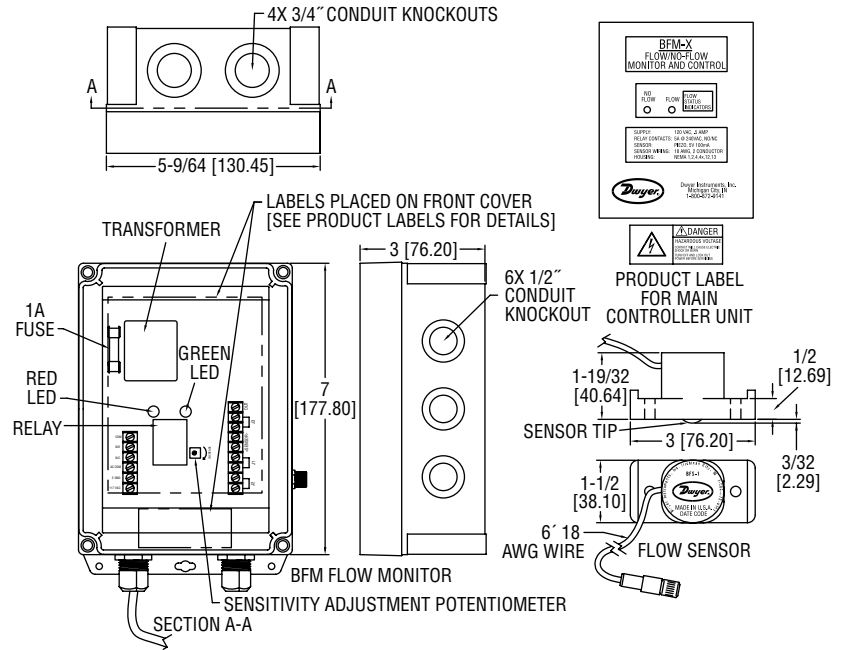
Monitors Movement of Solids and Liquids



**BFM**



**BFS**



**SERIES BFM** Bulk Flow Monitor provides effective monitoring for most flow/no flow conditions in pipes and chutes. Its sensing techniques, which use a Piezo element, makes the BFM versatile for most flow/no flow applications.

The BFM Control offers many unique advance features that exceed the industry standards. The BFM Central Processing Unit monitors movement of almost anything through a pipe or chute system. The BFM is ideal for sensing the presence or absence of materials in Pneumatic Conveying Systems. The BFM offers adjustable sensitivity depending on the application demand. Also, it provides easy installation and requires no maintenance. The unit has LED indicators – flow (green)/ no flow (red).

The BFS-1 Sensor yields many advance features. It externally mounts to the outside of the pipe or chute. It provides mounting tabs for easy installation. The Sensor is prewired with 3' wire.

Series BFM has many practical applications. You can use it to monitor oil spray systems, discharge chutes, distributors, screw conveyors, drag conveyors, water systems, air systems, pneumatic systems, gravity feed systems, slurry systems, chemical processing, food processing and rotary drums.

| MODEL CHART  |   |
|--------------|---|
| Model        | Description   |
| <b>BFM-1</b> | Control unit: NEMA 4X (IP66), polycarbonate housing, 120VAC |
| <b>BFM-2</b> | Control unit: NEMA 4X (IP66), polycarbonate housing, 220VAC |
| <b>BFM-3</b> | Control unit: NEMA 4X (IP66), polycarbonate housing, 12VDC  |
| <b>BFS-1</b> | Sensor  |

## SPECIFICATIONS

### BFM SPECIFICATIONS

**Service:** Solids and liquids.

**Power Requirement:** 120VAC, 220VAC or 12VDC.

**Power Consumption:** .1A.

**Temperature Limits:** 120°F (48.9°C).

**Output:** Relay: SPDT rated 4A @ 125/250VAC, 1/10 HP @ 125/250VAC, 3A @ 30VDC. TTL: 0-5 V.

**Serial Communications:** RS-232.

**Electrical Connection:** Screw terminal.

**Conduit Connection:** Knockouts (four 3/4" for power, six 1/2" for sensor and outputs).

**Enclosure Rating:** NEMA 4X (IP66).

**Material:** Polycarbonate.

**Weight:** 3 lb (1.36 kg).

### BFS SPECIFICATIONS

**Pipe Size:** 1/2" to 60" (1.27 to 152.4 cm).

**Enclosure Rating:** NEMA 4X (IP66).

**Electrical Connection:** 3' (0.9 m) of 18 gauge wire.

**Temperature Limits:** 155°F (68.3°C).

**Materials:** PVC type 1 grade 1 grey.

**Weight:** 5 oz (141.8 g).