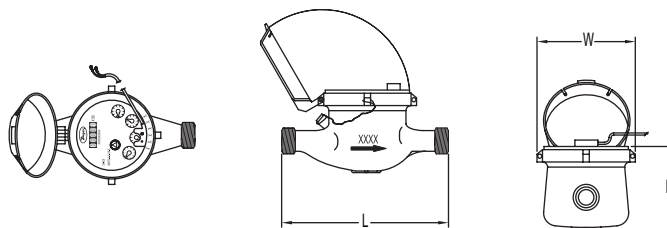




Series WPT Multi-Jet Plastic Water Meter

Specifications - Installation and Operating Instructions



Size in (mm)	Spud NPSM (BSPP)	Length 'L' in (mm)	Width 'W' in (mm)	Height 'H' in (mm)	Weight lb (kg)
5/8 x 1/2 (15)	3/4" (3/4")	6-1/2(165)	3-23/32 (94)	4-15/64 (107.5)	1.55 (0.7)
5/8 x 3/4	1" (1")	7-1/2(190)	3-23/32 (94)	4-15/64 (107.5)	1.77 (0.8)
3/4 x 1 (20)	1-1/4" (1-1/4")	10-1/4 (260)	3-23/32 (94)	4-15/64 (107.5)	2.43 (1.1)
1 (25)	1-1/4" (1-1/4")	10-1/4(260)	3-23/32 (94)	4-15/64 (107.5)	2.43 (1.1)
1-1/2 (40)	2" (2")	9-5/8 (245)	4-13/16 (122)	5-45/64 (141.5)	4.41 (2)

The **SERIES WPT** Plastic Multi-Jet Water Meters are a series of mechanical, water totalizing meters that display the total water usage in Gallons with m³ options. They are available in a range of body sizes and include NPT or BSPT optional couplings. The plastic body water meters can be used in potable water applications, some corrosive environments, or where an economical water totalizer is desired.

FEATURES/BENEFITS

- Plastic body ideal for lead free requirements
- Multi-jet design allows for simplicity and accuracy with side flow ranges, even in low flow applications
- Magnetically driven, hermetically sealed register does not leak or fog and is completely separated from the water
- Designed for long service life and maintenance-free operation
- Integral strainer that protects meter from particulate damage
- Easy installation with included coupling adapters
- Pulsed output proportional to flow allows for remote flow totalization

APPLICATIONS

- Low cost residential water measurement
- Agriculture (fertilizers, pesticides, and herbicides)
- Irrigation
- Remote water monitoring

Installation Instructions

1. Thoroughly flush the service line upstream of the meter to remove dirt and debris.
2. Remove meter spud thread protectors.

Note: To protect meter spud threads, store the meter with thread protectors in place.

3. Set the meter in the line. Install in a horizontal plane, with the register upright, in a location accessible for reading, service and inspect. There are arrows located on the side of the meter and above the outlet spud which indicate the direction of flow.
4. For accurate measurement, the tap height should be higher than the meter.
5. Do not over-tighten connections; tighten only as required to seal. Do not use pipe sealant tape on meter threads.

MODEL CHART

Model	Size	Coupling Size	GPM (Gallons Per Minute)			Display Max (Gallons)	Pulse Rate (Gal/Pulse)	Weight lb (kg)
			Max Flow	Nominal Flow Range	Transitional Flow			
WPT-A-C-01	5/8" x 1/2"	1/2" NPT	20	1 to 20	0.25	9,999,999.99	0.1	1.55 (0.7)
WPT-A-C-01-1	5/8" x 1/2"	1/2" NPT	20	1 to 20	0.25	9,999,999.99	1	1.55 (0.7)
WPT-A-C-01-10	5/8" x 1/2"	1/2" NPT	20	1 to 20	0.25	9,999,999.99	10	1.55 (0.7)
WPT-A-C-01-100	5/8" x 1/2"	1/2" NPT	20	1 to 20	0.25	9,999,999.99	100	1.55 (0.7)
WPT-A-C-02	5/8" x 3/4"	3/4" NPT	20	1 to 20	0.25	9,999,999.99	0.1	1.77 (0.8)
WPT-A-C-02-1	5/8" x 3/4"	3/4" NPT	20	1 to 20	0.25	9,999,999.99	1	1.77 (0.8)
WPT-A-C-02-10	5/8" x 3/4"	3/4" NPT	20	1 to 20	0.25	9,999,999.99	10	1.77 (0.8)
WPT-A-C-02-100	5/8" x 3/4"	3/4" NPT	20	1 to 20	0.25	9,999,999.99	100	1.77 (0.8)
WPT-A-C-03	3/4" x 1"	1" NPT	30	2 to 30	0.5	9,999,999.99	0.1	2.43 (1.1)
WPT-A-C-03-1	3/4" x 1"	1" NPT	30	2 to 30	0.5	9,999,999.99	1	2.43 (1.1)
WPT-A-C-03-10	3/4" x 1"	1" NPT	30	2 to 30	0.5	9,999,999.99	10	2.43 (1.1)
WPT-A-C-03-100	3/4" x 1"	1" NPT	30	2 to 30	0.5	9,999,999.99	100	2.43 (1.1)
WPT-A-C-04	1"	1" NPT	50	3 to 50	0.75	9,999,999.99	0.1	2.43 (1.1)
WPT-A-C-04-1	1"	1" NPT	50	3 to 50	0.75	9,999,999.99	1	2.43 (1.1)
WPT-A-C-04-10	1"	1" NPT	50	3 to 50	0.75	9,999,999.99	10	2.43 (1.1)
WPT-A-C-04-100	1"	1" NPT	50	3 to 50	0.75	9,999,999.99	100	2.43 (1.1)
WPT-A-C-05-1	1-1/2"	1-1/2" NPT	100	5 to 100	1.5	9,999,999.9	1	4.41 (2)
WPT-A-C-05-10	1-1/2"	1-1/2" NPT	100	5 to 100	1.5	9,999,999.9	10	4.41 (2)
WPT-A-C-05-100	1-1/2"	1-1/2" NPT	100	5 to 100	1.5	9,999,999.9	100	4.41 (2)

SPECIFICATIONS	
Service: Water. Wetted Materials: Body: Nylon 66; Couplings: Nylon 66, 1-1/2" (40 mm) sizes lead free ECO BRASS® alloy; Measuring Chamber: ABS Plastic. Flow Range: See model chart. Accuracy: WPT-A-X-XX: Transitional Flow: ±3%; Nominal Flow: ±1.5%; WPT-B-X-XX*: Transitional Flow: ±5%; Nominal Flow: ±2%. Temperature Limit: 122°F (50°C). Pressure Limit: 150 psi (10 bar). Pressure Drop: See pressure drop curve below.	Totalizing Display Maximum: See model chart. Output Signal: Pulse output with frequency proportional to flow rate. Pulse Options: 0.1 gal, 1 gal, 10 gal, 100 gal per pulse (1 L, 10 L, 100 L, 1000 per pulse) See model chart.* Electrical Rating: 0.01 A @ 24 VAC/DC. Electrical Connections: Color-coded lead wires, 4.5' (1.5 m) long. Mounting Orientation: Horizontal with register facing up. Weight: See dimension chart.

CAUTION Unit must be installed in a horizontal position with the register face pointing up otherwise leakage and/or meter damage will occur.

With upstream shutoff valve only:

6. Open shutoff valve slowly, to remove air from meter and service line. Open a faucet slowly to allow entrapped air to escape. Close the faucet.

With both upstream and downstream shutoff valves installed:

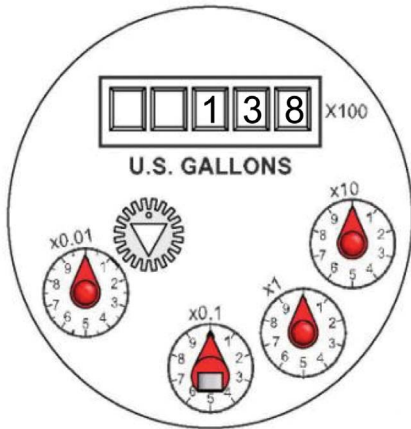
7. Test the installation for leaks: Close the outlet (downstream) shutoff valve. Open the inlet (upstream) shutoff slowly until meter is full of water. Open the outlet (downstream) valve slowly until air is out of the meter and service line. Open a faucet slowly to allow entrapped air to escape. Close the faucet.

ECO BRASS® is a registered trademark patent by Mitsubishi Shindoh

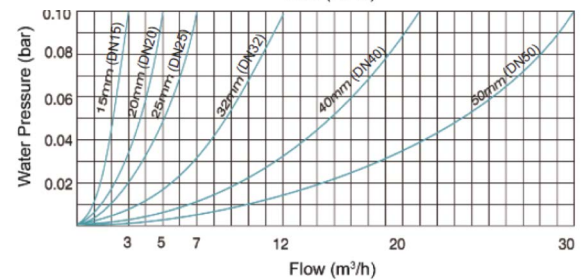
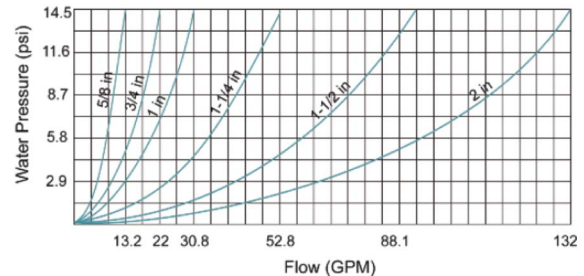
Model	Size	Coupling Size	GPM (Gallons Per Minute)			Display Max (Gallons)	Pulse Rate (Gal/Pulse)	Weight lb (kg)
			Max Flow	Nominal Flow Range	Transitional Flow			
WPT-B-C-06-1	15 mm	1/2" BSPT	3	.12 to 1.5	0.03	9,999,999.99	1	1.55 (0.7)
WPT-B-C-07-1	20 mm	3/4" BSPT	5	.2 to 2.5	0.03	9,999,999.99	1	1.77 (0.8)
WPT-B-C-08-1	25 mm	1" BSPT	7	.25 to 3.5	0.07	9,999,999.99	1	2.43 (1.1)
WPT-B-C-09-1	32 mm	1-1/4" BSPT	12	.48 to 6	0.12	9,999,999.99	1	2.54 (1.15)
WPT-B-C-06-10	15 mm	1/2" BSPT	3	.12 to 1.5	0.03	9,999,999.99	10	1.55 (0.7)
WPT-B-C-07-10	20 mm	3/4" BSPT	5	.2 to 2.5	0.03	9,999,999.99	10	1.77 (0.8)
WPT-B-C-08-10	25 mm	1" BSPT	7	.25 to 3.5	0.07	9,999,999.99	10	2.43 (1.1)
WPT-B-C-09-10	32 mm	1-1/4" BSPT	12	.48 to 6	0.12	9,999,999.99	10	2.54 (1.15)
WPT-B-C-10-10	40 mm	1-3/4" BSPT	20	.8 to 10	0.2	9,999,999.99	10	4.41 (2)
WPT-B-C-06-100	15 mm	1/2" BSPT	3	.12 to 1.5	0.03	9,999,999.99	100	1.55 (0.7)
WPT-B-C-07-100	20 mm	3/4" BSPT	5	.2 to 2.5	0.03	9,999,999.99	100	1.77 (0.8)
WPT-B-C-08-100	25 mm	1" BSPT	7	.25 to 3.5	0.07	9,999,999.99	100	2.43 (1.1)
WPT-B-C-09-100	32 mm	1-1/4" BSPT	12	.48 to 6	0.12	9,999,999.99	100	2.54 (1.15)
WPT-B-C-10-100	40 mm	1-3/4" BSPT	30	.8 to 10	0.2	9,999,999.99	100	4.41 (2)
WPT-B-C-06-1000	15 mm	1/2" BSPT	3	.12 to 1.5	0.03	9,999,999.99	1000	1.55 (0.7)
WPT-B-C-06-1000	20 mm	3/4" BSPT	5	.2 to 2.5	0.03	9,999,999.99	1000	1.77 (0.8)
WPT-B-C-06-1000	25 mm	1" BSPT	7	.25 to 3.5	0.07	9,999,999.99	1000	2.43 (1.1)
WPT-B-C-06-1000	32 mm	1-1/4" BSPT	12	.48 to 6	0.12	9,999,999.99	1000	2.54 (1.15)
WPT-B-C-06-1000	40 mm	1-3/4" BSPT	20	.8 to 10	0.2	9,999,999.99	1000	4.41 (2)

Meter Reading

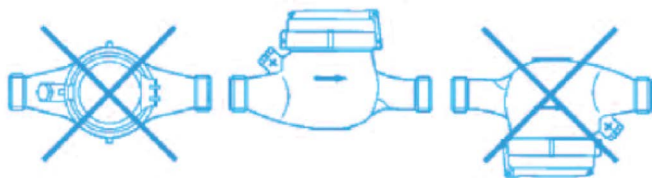
The total flow that has passed through your meter is read by starting at the top of the register with the Five-Digit Totalizer, and then read clockwise around the small dials. In the example below, the Five-Digit Totalizer reads 13800 (138 x 100), and the dials read 0 (0 x 10), 0 (0 x 1), and 0 (0 x 0.1) respectively. The total flow is 13800.0



Pressure Drop



Installation

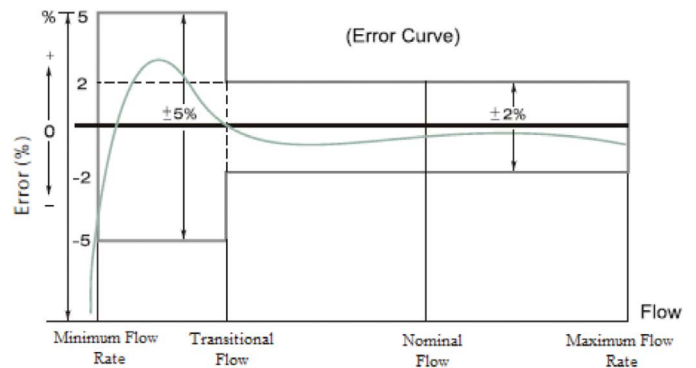


Incorrect

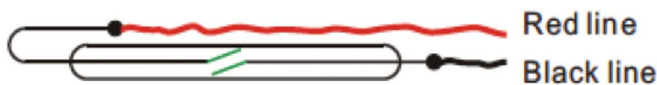
Correct

Incorrect

Accuracy Chart



Electrical Installation



Red line

Black line

MAINTENANCE/REPAIR

Upon final installation of the Series WPT, no routine maintenance is required. The Series WPT is not field serviceable and is not possible to repair the unit. Field repair should not be attempted and may void warranty.

WARRANTY/RETURN

Refer to "Terms and Conditions of Sale" in our catalog and on our website. Contact customer service to receive a Return Goods Authorization number before shipping the product back for repair. Be sure to include a brief description of the problem plus any additional application notes.