

Temperature transmitter is an integral element of temperature sensor, available also as a separate component. It converts temperature sensor signal to analogue 4+20mA, voltage 0+10V or different signal. Transmitter can be placed directly in connection head or on TS-35mm rail.

Specification

Characteristic

- programmable transmitter
- accurate calibration
- mounting in connection head BA: LTT-03B, LTT-03BU
- mounting on a 35 mm rail: LTT-03T, LTT-03TU
- mounting in connection head MA (miniature): LTT-03J

Input

Pt100 3-wire for LTT-03B, LTT-03BU
Pt100 2-wire for LTT-03J

Output

4+20 mA for LTT-03B, LTT-03J
0+10V for LTT-03 BU - input resistance min. 10kΩ

Measuring range

-200+800°C

Range span

Min. range span 25°C
with range span <75°C constant zero point range -40°C, -20°C, 0°C, 20°C.
With span ≥75°C zero point in range (-50+50°C)

Accuracy

≤0,1% of range

Response time

< 10 ms

Galvanic isolation

not present

Max. loop resistance

$R_{L\ max} = (U_{supply} - 7,5) / 0,022 \ [\Omega]$

Lead wire connection

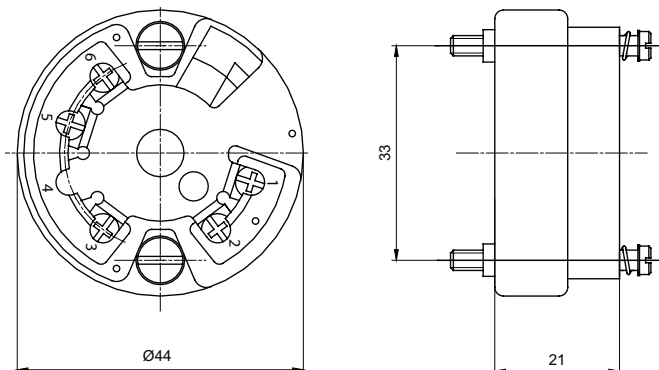
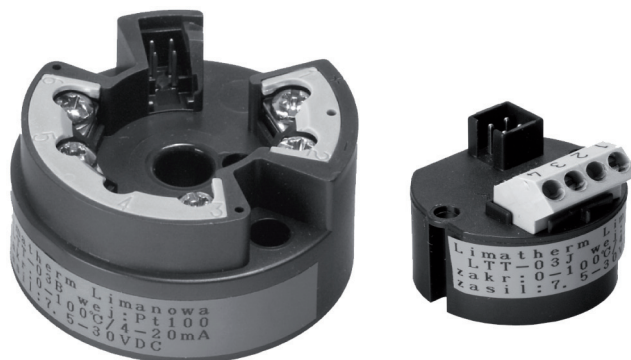
LTT-03B, BU ≤1,75 mm²
LTT-03J < 1,5 mm²

Power supply

7,5+30V DC for LTT-03B, LTT-03J
15+30V DC for LTT-03BU

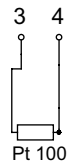
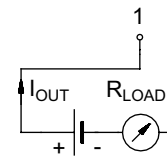
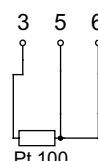
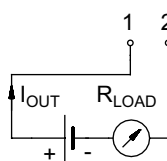
Operating conditions

temperature: -40+85°C
humidity: ≤95% RH



LTT-03B

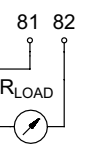
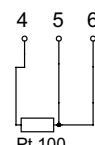
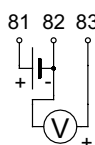
LTT-03J



LTT-03TU

LTT-03BU

LTT-03T



Product code

1	<input type="text"/>	Output	
		BU, TU	0÷10V
2	<input type="text"/>	B, J, T	4÷20mA
		Temperature range	
		(-20÷20)°C	(0÷1000)°C
3	<input type="text"/>	Equipment	
		A	with adapter for 35mm rail mounting for B i BU

1 2 3

LTT03 - -

Ordering example: **Transmitters LTT-03B-(-20÷20)°C-A**