

# HIGH-CAPACITY TENSION LINK LOAD CELLS

Custom Units  
Available with  
Built-In Amplifiers!

**Calibrated in Tension\***  
0-5000 lb to 0-1,000,000 lb  
0-2269 kgf to 0-453,721 kgf

## LC702/LC712 Series



Standard

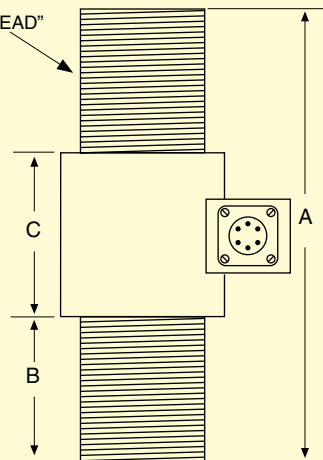
- ✓ All Stainless Steel Construction
- ✓ Accuracy of 0.15%
- ✓ Heavy-Duty Construction for High-Capacity Loads



LC712-5K,  
Shown smaller  
than actual size.

Wire	PIN	Connection
GN	A	+Output
WT	B	-Output
BK	C&E	-Input
RD	D&F	+Input

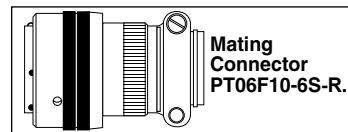
"E THREAD"



PTIH-10-6P  
OR EQUAL

BOTTOM VIEW

To order with amplified  
0 to 5V output, add suffix  
"-5V" to model number  
for additional cost.



Dimensions: mm (inch)

CAPACITY (lb)	A	B	C	D	E
5K to 10K	140 (5.50)	32 (1.25)	76 (3.00)	76 (3.00)	1-14 NS
20K to 50K	165 (6.50)	51 (2.00)	64 (2.50)	76 (3.00)	1½-12 UN
75K to 100K	200 (7.88)	64 (2.53)	72 (2.84)	76 (3.00)	2¼-12 UN
150K to 200K	260 (10.25)	83 (3.25)	95 (3.75)	102 (4.10)	3-8 UN
250K to 300K	323 (12.75)	114 (4.50)	95 (3.75)	141 (5.56)	4-8 UN
400K to 600K	381 (15.00)	142 (5.63)	95 (3.75)	168 (6.63)	5-8 UN
750K to 1000K	444 (17.50)	168 (6.63)	108 (4.25)	219 (8.63)	6-8 UN

OMEGA's LC702 Series tension links have a 1.8 m (6') cable, and the LC712 Series links have an integral connector. Both series comprise all stainless steel, high-capacity, in-line tension load cells for applications such as cables on cranes, support rods in architectural designs, engine test beds, and industrial weighing.

## SPECIFICATIONS

**Output:** 2 mV/V ±0.25 % FSO

**Excitation:** 10 Vdc (15V max)

**Linearity:** ±0.10% FSO

**Hysteresis:** ±0.10% FSO

**Repeatability:** ±0.05% FSO

**Zero Balance:** ±1.0% FSO

**Operating Temp Range:**

-34 to 121°C (-30 to 250°F)

**Compensated Temp Range:**

16 to 71°C (60 to 160°F)

**Thermal Effects:**

**Zero:** ±0.009% FSO/°C

(±0.005% FSO/°F)

**Span:** ±0.009% FSO/°C

(±0.005% FSO/°F)

**Safe Overload:** 150% of capacity

**Ultimate Overload:** 300% of capacity

**Bridge Resistance:** 350 Ω

**Construction:** Stainless steel

**Electrical:**

LC702: 1.8 m (6') 4-conductor cable

LC712: DT02H-10-6P (or equiv.)

**Protection Class:** IP67

**Mating Connector:** PT06F10-6S-R,  
(sold separately)

**Calibration:** Calibrated in tension\*

\* ≥150,000 lb calibrated in compression.

For calibrations ≥300,000 lb, add suffix  
"-FS" and consult Sales for price and delivery.

## To Order

### MODELS WITH 1.8 m (6') CABLE OR WITH INTEGRAL CONNECTOR

CAPACITY		CABLE STYLE	CONN. STYLE	COMPATIBLE METERS
5000 lb	2269 kgf	LC702-5K	LC712-5K	DPIS, DP41-S, DP25B-S
10,000 lb	4537 kgf	LC702-10K	LC712-10K	DPIS, DP41-S, DP25B-S
20,000 lb	9074 kgf	LC702-20K	LC712-20K	DPIS, DP41-S, DP25B-S*
30,000 lb	13,612 kgf	LC702-30K	LC712-30K	DPIS, DP41-S, DP25B-S*
50,000 lb	22,686 kgf	LC702-50K	LC712-50K	DPIS, DP41-S, DP25B-S*
100,000 lb	45,372 kgf	LC702-100K	LC712-100K	DPIS, DP41-S, DP25B-S*
150,000 lb	68,058 kgf	LC702-150K	LC712-150K	DPIS, DP41-S, DP25B-S*
200,000 lb	90,744 kgf	LC702-200K	LC712-200K	DPIS, DP41-S, DP25B-S*
300,000 lb	136,116 kgf	LC702-300K	LC712-300K	DPIS, DP41-S, DP25B-S*
500,000 lb	226,860 kgf	LC702-500K	LC712-500K	DPIS, DP41-S, DP25B-S*
1,000,000 lb	453,721 kgf	LC702-1M	LC712-1M	DPIS, DP41-S, DP25B-S*

### ACCESSORY

MODELNO.	DESCRIPTION
PT06F10-6S-R	Mating connector for LC712 series load cells

Comes complete with 5-point NIST-traceable calibration and 59 kΩ shunt data.

\* 4-digit meter, counts by 10.

To order additional cable add length, in feet, to the end of the model number, additional price per foot over 1.8 m (6').

**Ordering Examples:** LC702-5K-25FT, 5000 lb capacity tension link with 7.6 m (25') 4-conductor cable. LC712-100K, 100,000 lb capacity tension link with integral twist-lock connector. PT06F10-6S-R, mating connector (sold separately).

LC702-200K, 200,000 lb capacity tension link with standard 1.8 m (6') 4-conductor cable.