

Thermocouple Temperature Data Logger with LCD Display Part of the NOMAD® Family

OM-CP-TCTEMP2000



- ✓ Large, Backlit LCD Display
- ✓ Accepts Thermocouple Types J, K, T, E, R, S, B, N
- ✓ Front Keypad with Lock Feature
- ✓ High Speed Download
- ✓ Real-Time Operation
- ✓ Min/Max and Average Statistics
- ✓ Programmable Start/Stop Time
- ✓ NIST Traceable Calibration
- ✓ User-Selectable Measurement Units
- ✓ User Replaceable Battery and External Power
- ✓ Wall Mountable

The OM-CP-TCTEMP2000 is a battery powered thermocouple temperature data logger with an LCD display. This data logger has an internal temperature sensor and one external input for J, K, T, E, R, S, B, and N type thermocouples.

The 8-button keypad and large LCD provide convenient access to current data and recorder setup. Additionally, memory and battery levels, external power status, and sampling and recording status are shown on the LCD.

Available on-screen data includes: statistics (min, max, average); recording status (start, stop and recording rate); display options (units, text size); and calibration information (date calibrated, date for recalibration). Statistics can be cleared at any time during logging.

With 131,071 readings, the OM-CP-TCTEMP2000 has one of the largest memory capacities of any similar data recorder on the market. The non-volatile memory will retain recorded data, even if AC and battery power are lost.



OM-CP-TCTEMP2000 data logger shown actual size

The OM-CP-TCTEMP2000 runs on a 9V battery with a typical battery life of 1 year at a 1 min reading rate with the display off. With continuous LCD and no backlight usage, the average battery life is 30 days. For power savings, both the LCD and backlight have configurable auto-off options.

Those wanting to keep the LCD display and backlight continuously active need only to connect the unit to an AC power supply, keeping the 9V battery connected as a back-up.

NIST traceable calibration is available for users needing to meet regulatory requirements. Creating permanent records, performing data calculations, and the graphing of data is quick and easy: Simply connect the interface cable to an available USB or serial port and with a few clicks of the mouse, data is downloaded and ready for review or export to Excel.

Specifications

INTERNAL CHANNEL

Temperature Range:

-20 to 60°C (-4 to 140°F)

Temperature Resolution: 0.1°C

Calibrated Accuracy: ±0.5°C

(0 to 50°C)

THERMOCOUPLE CHANNEL

Thermocouple Types:

J, K, T, E, R, S, B, N

Thermocouple Connection: Female subminiature (SMP)

Cold Junction Compensation:

Automatic, based on internal channel

Maximum Thermocouple Resistance:

1000Ω, <100Ω recommended

DOT-MATRIX LCD

Dimensions:

63 x 35 mm (2.5 x 1.375")

Text: Configurable channel text size

Indicators: Power, status, memory

Backlight: Configurable with auto shut-off and contrast adjustment

Start/Stop Time: Software programmable start time and date, up to six months in advance; programmable stop time

Memory: 131,071 readings per channel; 262,143 total readings; software configurable memory wrap

Reading Rate: 1 reading every 2 seconds to 1 every 24 hours

Calibration: Digital calibration through software

Calibration Date: Automatically recorded within device

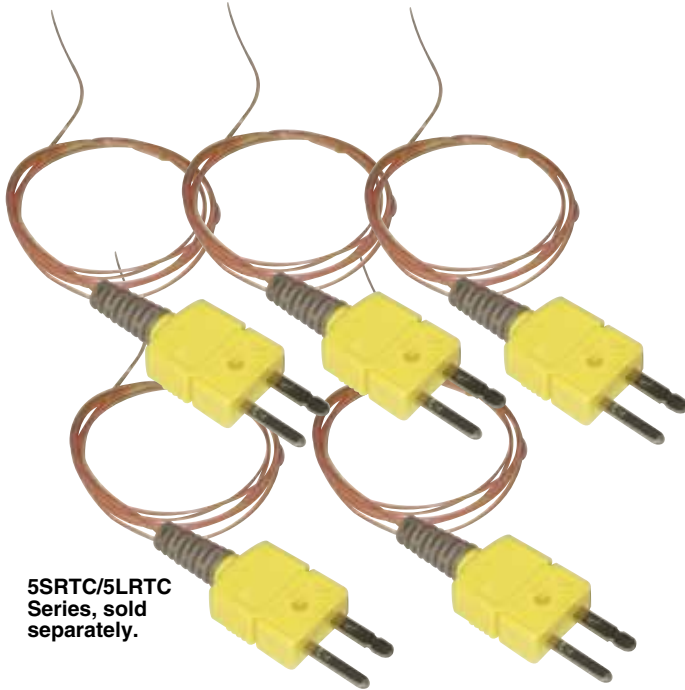
Battery Type: 9V lithium battery (included), user replaceable; optional AC adaptor

Thermocouple Type	Range	Resolution	Accuracy*
J	-210 to 760°C	0.1°C	±0.5°C
K	-270 to 1370°C	0.1°C	±0.5°C
T	-270 to 400°C	0.1°C	±0.5°C
E	-270 to 980°C	0.1°C	±0.5°C
R	-50 to 1760°C	0.5°C	±2.0°C
S	-50 to 1760°C	0.5°C	±2.0°C
B	50 to 1820°C	0.5°C	±2.0°C
N	-270 to 1300°C	0.1°C	±0.5°C

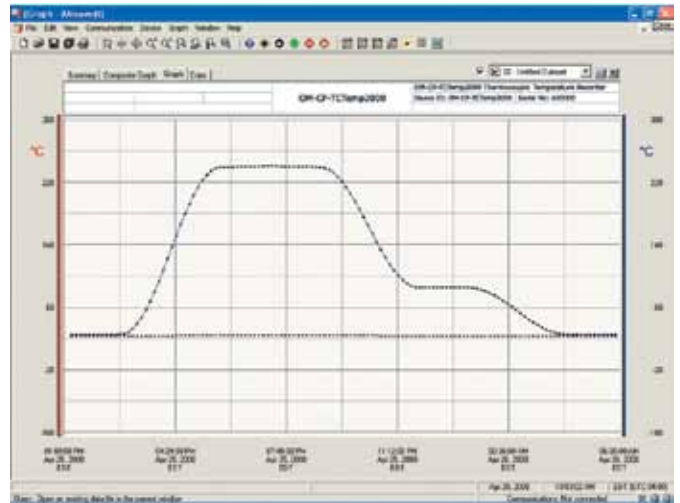
* Accuracy does not include errors due to thermocouple.



OM-CP-TCTEMP2000 data logger shown smaller than actual size



5SRTC/5LRTC Series, sold separately.



OM-CP-IFC200 Windows® software displays data in graphical or tabular format

Battery Life: 1 year battery life at 1 min reading rate with display off. 30 days typical with continuous LCD and no backlight usage

Data Format: Date and time stamped °C, °F, K, °R

Time Accuracy: ±1 minute/month (at 20 to 30°C)

Computer Interface: PC serial or USB (interface cable required); 115,200 baud

Software: XP SP3/Vista/7 and 8 (32-bit and 64-bit)

Operating Environment:

-20 to 60°C (-4 to 140°F), 0 to 95% RH non-condensing

Dimensions: 122 x 84 x 32 mm (4.8 x 3.3 x 1.25")

Weight: 440 g (16 oz)

Enclosure: Black anodized aluminum

To Order

Model No.	Description
OM-CP-TCTEMP2000	Thermocouple temperature data logger with LCD display
OM-CP-TCTEMP2000-CERT	Thermocouple temperature data logger with LCD display and NIST calibration certificate
OM-CP-IFC200	Windows software and 1.8 m (6') USB interface cable
OM-CP-SVP-SYSTEM	FDA 21 CFR part 11 compliant IQ/OQ/PQ secure software validation workbook and software package (unlimited users, license per computer)
OM-CP-BAT103	Replacement 9V lithium battery
OM-CP-110-PWR-2000	110 Vac power adaptor
OM-CP-220-PWR-2000	220 Vac power adaptor

Comes complete with 9V lithium battery. Operator's manual and USB interface cable are included with the OM-CP-IFC200 software/cable package (required for data logger operation, sold separately).

Ordering Example: OM-CP-TCTEMP2000-CERT, thermocouple temperature data logger with LCD display and NIST calibration certificate and OM-CP-IFC200, Windows software and USB cable with DB9F termination.