

1. IMPORTANT – BEFORE INSTALLING

Plast-O-Matic BSR valves are normally closed by spring and are opened with air pressure. The minimum air pressure to open is 25 PSIG and the maximum allowable air pressure is 100 PSIG. The air supply should be filtered, regulated, and lubricated. Lubricant should be compatible with the Viton or EPDM seals in the air chamber.

2. SPECIFICATIONS – 1/2" AND 3/4" BSR

BODY MAT'L	COLOR	MAX INLET AND OUTLET PSIG @ given temp °F	MAX. AIR PSIG @ Given temperature °F
PVC	Gray	150 PSIG @ 77° F 40 PSIG @ 140° F	All configurations 100 @ 77° F
POLYPRO	White	100 PSIG @ 77° F 50 PSIG @ 140° F 20 PSIG @ 180° F	

3. PRESSURE SERVICE ONLY-UNLESS NOTED

All Series BSR valves are normally configured for pressure service only unless specified "VACUUM SERVICE" when ordered. If you are not sure, contact your distributor. For vacuum service, the two smaller shaft u-cups (item 9 on next page) will have the open end facing up, instead of down as shown.

4. INSTALLATION

Install the valve in the proper flow direction as indicated by the arrow on the label. Note that UV light (sunlight) will degrade plastic materials.

Threaded connections: A suitable thread sealant e.g. PTFE tape should be applied to male thread to provide a leak tight seal. **Note that many thread sealant products, pastes, tapes, dopes, threadloks, etc. are NOT compatible with plastics.** If in doubt, contact the thread sealant manufacturer. Do not use a valve if it has come in contact with incompatible materials.

Assemble hand tight followed by a quarter turn using a strap wrench. Do not over tighten or use a pipe wrench on plastic parts. The resultant markings on the body will weaken the body with possible failure occurring in the future.

Caution: PTFE tape "strings" when the fitting is tightened. These strings can get into the valve thus causing internal leakage if they end up on the valve seat. To avoid this, be sure to clean out old tape and when applying new tape do not apply to the first thread of the male fitting.

Caution: Do not connect metal fittings into this valve. Use plastic only. Metal pipe should only be installed with an intervening plastic nipple.

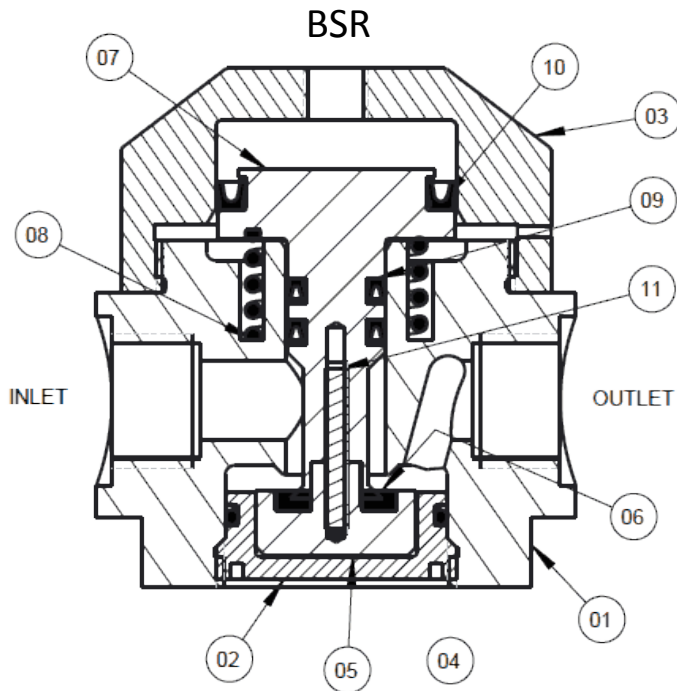
Non threaded connections: For solvent cementing or heat fusion, follow the instructions supplied with your cement or fusion equipment, or contact your distributor.

Air connection: The recommended air pressure is 25 to 100 PSIG at 77° F. The air supply should be filtered, regulated, and lubricated. Lubricant should be compatible with the Viton or EPDM seals in the air chamber.

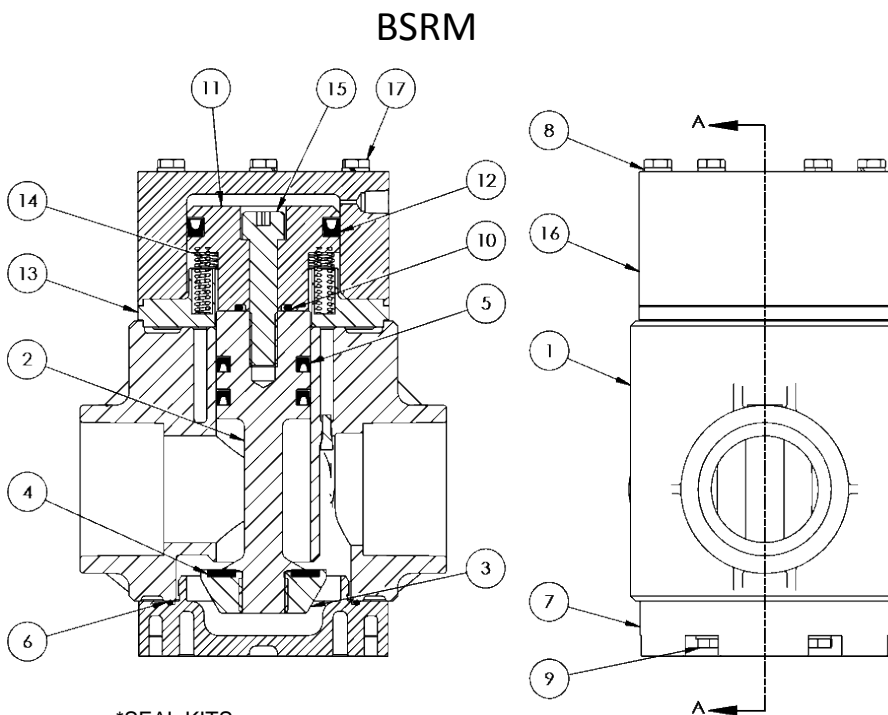
Mounting: These valves are designed to be supported by the piping. The piping must be properly supported taking into account the weight of the valve, piping and process fluid. Four 1/4" – 20 holes are provided on the bottom for panel mounting.

5. Maintenance: Plast-O-Matic recommends keeping a spare seal kit on hand. Seal life will vary based on chemical compatibility, temperature (higher temperature means shorter seal life), cycles. A periodic inspection should be made based on history of the application.





ITEM	QTY	DESCRIPTION
01	1	BODY
02	1	PLUG
03	1	AIR HEAD, BSR050
*04	1	O-RING
05	1	SEAT RETAINER
*06	1	SEAT DISK
07	1	PISTON
08	1	SPRING
*09	2	U-CUP
*10	1	U-CUP
11	1	STUD



ITEM	QTY	DESCRIPTION
1	1	PVC SOCKET BSRM BODY ASSEMBLY
2	1	PVC SHAFT
3	1	PVC SEAT RETAINER
4	1	SEAT GASKET
5	2	EPDM U-CUP, METAL ION FREE
6	1	EPDM O-RING
7	1	PVC MACHINED BASE PLATE
8	12	SS LOCKWASHER
9	6	SS TAP BOLT HEX HEAD
10	1	BUNA O-RING
11	1	PVC PISTON
12	1	BUNA U-CUP
13	1	PVC SPACER PLATE, BSRM
14	10	SS SPRING FOR BSRM
15	1	SS CAP SCREW SOCKET HD
16	1	PVC AIR HEAD, BSRM
17	6	SS CAP SCREW, HEX HEAD

***SEAL KITS:**

- 1) SEAL KITS INCLUDE ALL ITEMS MARKED WITH "**"
- 2) SEAL KIT PART NUMBERS ARE ALWAYS "SK" FOLLOWED BY THE VALVE SERIES NUMBER; ie: SKBSR050V-NC.

Parts must have suffix added when ordering: PV for PVC, PP for Polypro, V for Viton, EP for EP rubber. Seal kit parts denoted by *

