

Barometric Pressure, Temperature, Humidity Virtual Recorder



iBTX Series



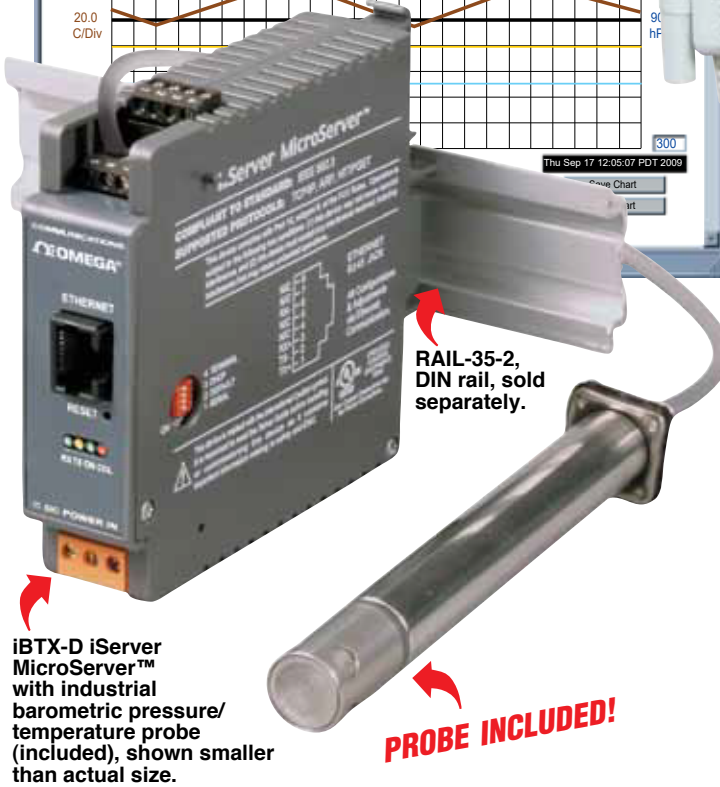
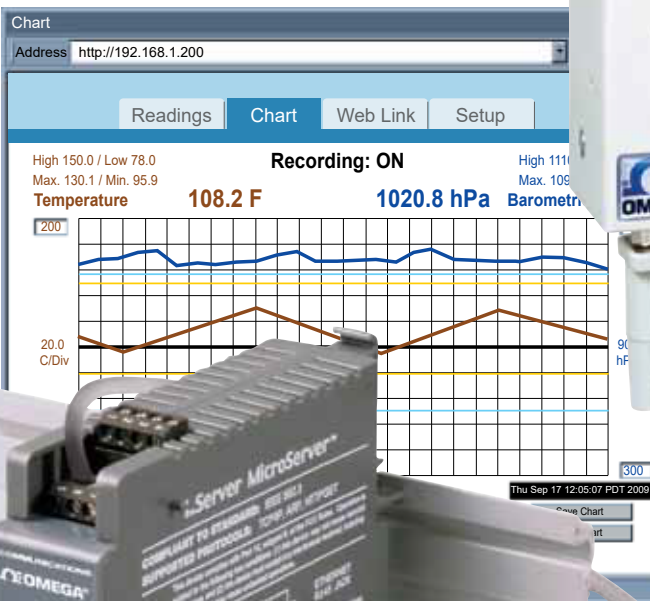
- ✓ Virtual Chart Recorder
- ✓ Web Server
- ✓ Alarms by Email or Text Message
- ✓ No Special Software Required
- ✓ iBTX-SD: Records Years of Data on Popular SD Cards



iBTX-SD shown smaller than actual size.

iBTX-W shown smaller than actual size.

See Page Hu-12 to Order!



iBTX-D iServer MicroServer™ with industrial barometric pressure/temperature probe (included), shown smaller than actual size.

RAIL-35-2, DIN rail, sold separately.

PROBE INCLUDED!

View Barometric Pressure, Temperature, and Humidity with a Web Browser

The OMEGA® iBTHX transmitter let's you monitor and record Barometric Pressure, Temperature, Relative Humidity and Dew Point over an Ethernet network or the Internet with no special software except a Web Browser.

The iBTHX serves Active Web Pages to display real time readings, display charts of Barometric Pressure, temperature, humidity, and dew point or log data in standard data formats for use in a spreadsheet or data acquisition program such as Excel or Visual Basic.

The virtual chart viewed on the web page is a JAVA™ Applet that records a chart over the LAN or Internet in real time. With the iBTHX, there is no need to invest time and money learning a proprietary software program to log or chart the data.

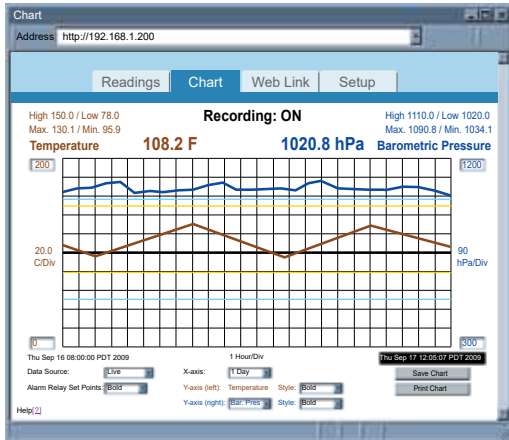


Adjustable Charts

Chart scales are fully adjustable on the fly. For example, the chart can display one minute, one hour, one day, one week, one month or one year.

Temperature and humidity can be charted across the full span (-40 to 85°C, and 0 to 100% RH) or within any narrow range such as (20 to 30°C).

Barometric Pressure can be displayed in hectopascals (hPa), millimeters of Mercury (mmHg), or inches of Mercury (inHg).



Adjustable-chart Web page.

Display and Chart Measurements

The iBTHX transmitters come complete with a barometric pressure, temperature and humidity probe for measurement of a single location. OMEGA offers a choice of industrial probes in 5" lengths and a wand style for ambient indoor applications.

Award-winning Technology

The iBTHX is simple to install and use, and features OMEGA's award-winning iServer technology that requires no special software except a Web Browser. The iBTHX connects to an Ethernet Network with a standard RJ45 connector and sends data in standard TCP/IP packets.

It is easily configured with a simple menu using a Web Browser and can be password protected.

From within an Ethernet LAN or over the Internet, the user simply types its IP address or an easy to remember name such as "Cleanroom5" or "ServerRoom" in any Web Browser, and the iBTHX serves a Web Page with the current readings.

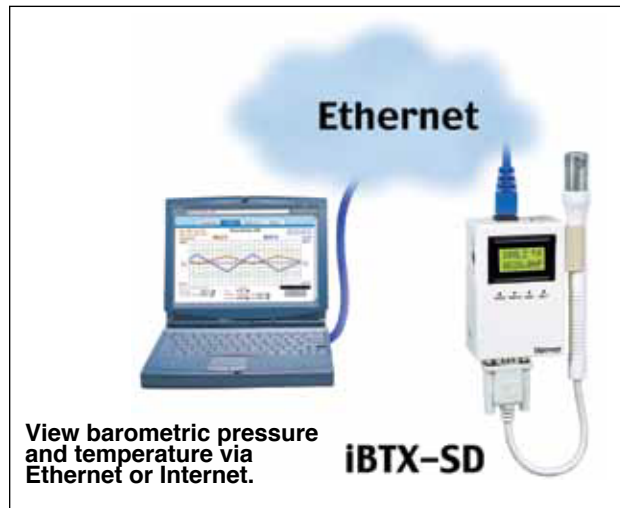
Email Alarms

All OMEGA iBTHX models that are on a LAN that is connected to the Internet can trigger an alarm that can be sent by email to a user or a distribution list anywhere in the world, including text messages to cell phones and PDA's.

NIST-traceable calibration certificate available.
In compliance with ISO9001:2008, ISO10012-1:1992(E),
ANSI/NCSL Z540-1:1994 and MIL-STD-45662A.

Typical Applications

The iBTHX is great for monitoring barometric pressure, temperature + humidity in applications such as: clean rooms, computer rooms, HVAC systems, pharmaceutical and food processing and storage, hospitals, laboratories, semiconductor fabs, electronic assembly, warehousing, museums, manufacturing, green-houses, farm animal shelters, and many more.



View barometric pressure and temperature via Ethernet or Internet.

NEW iBTHX-SD with SD Flash Memory Card and LCD Display

The OMEGA model iBTHX-SD with LCD display, adds several valuable features in addition to the backlit local display of barometric pressure and temperature.

SD Flash Memory Card

The iBTHX-SD comes complete with a removable 2 GB SD Flash Memory card that can store up to seven years of readings taken at ten second intervals.

Records on SD Flash Cards

The data is recorded on widely available SD (Secure Digital) flash cards. The format is a simple ".txt" text file that is easily imported to spread sheets and other programs. It can be read on a PC or MAC with a USB card reader. You can also download the data remotely over an Ethernet network or the Internet.

Alarm Relays

The iBTHX-SD features two 1.5 Amp relays. With the easy Web-based setup page, the two relays can be programmed for any combination of temperature or pressure, and high or low set points. The relays can also be programmed to remain latched and require a manual reset if a limit is exceeded.

Battery Backup

The iBTHX-SD comes with a universal 100 to 240 Vac power adapter.

A standard 9 Volt Alkaline battery (also included) allows the device to log data for up to 2 days without external ac power. A failure on the Ethernet network will not interrupt data recording.



Sensor Specifications Barometric Pressure (iBTX, iBTHX)

Accuracy/Range at 25°C: ±3.5 mbar/
From 10 to 1100 mbar (1 to 110 kPa)
Resolution: 0.1 mbar

Relative Humidity (iBTHX)

Accuracy/Range at 25°C - Non-Condensing:
10 to 90%: ±2.75%
5 to 10% and 90 to 95%: ±3%
0 to 5% and 95 to 100%: ±4%

Non-linearity: ±3%

Hysteresis: ±1%RH

Response Time: 8 seconds, tau 63%

Repeatability: ±0.1%

Resolution: 0.1%, 12 bit

Temperature (iBTHX)

Accuracy/Range*:

Wand Probe: ±0.5°C for 5 to 45°C
(±1°F for 41 to 113°F); up to
±1°C for 0 to 5°C and 45 to 70°C
(up to 2°F for 32 to 41°F and
113 to 158°F)

Industrial Probe: (see chart in manual)

±0.5°C for 5 to 45°C
(±1°F for 41 to 113°F);
up to ±1.5°C for -40 to 5°C and
45 to 85°C (up ±2.7°F for
-40 to 41°F and 113 to 185°F)

* **Note:** Extended temperature range is
for industrial probe only; the iServer's
operating temperature is 0 to 70°C.

Response Time: 5 to 30 seconds,
tau 63%

Repeatability: ±0.1°C

Resolution: 0.1°C, 14-bit

Temperature (iBTX)

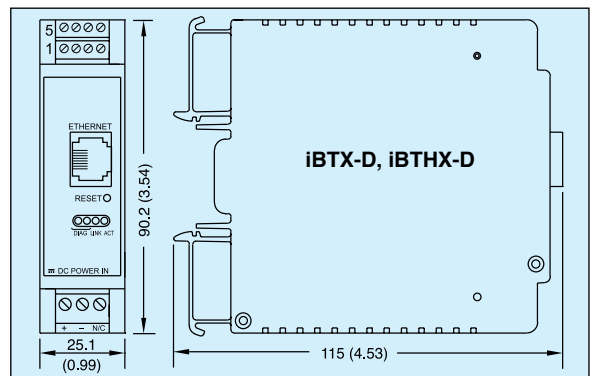
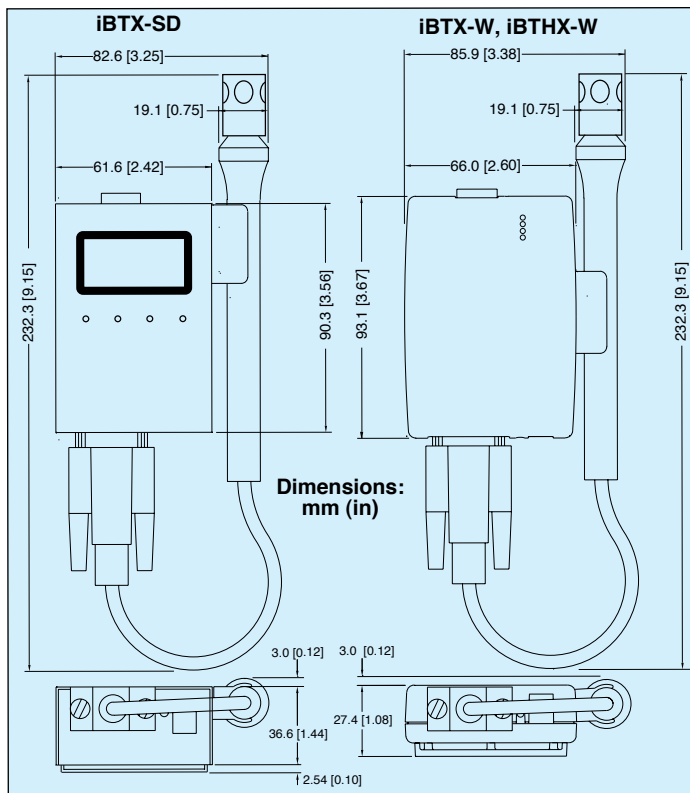
Accuracy/Range*:

Wand Probe: ±0.8°C @ 20°C
(±1.5°F @ 68°F); ±2°C for 0 to 70°C
(±3.6°F for 32 to 158°F)

Industrial Probe: ±0.8°C @ 20°C
(±1.5°F @ 68°F); ±2°C for -40 to 85°C
(±3.6°F for -4 to 185°F)

* **Note:** Extended temperature range is for
industrial probe only; the iServer's operating
temperature is 0 to 70°C.

Time	Temperature	Humidity	Pressure	Error
09:05 11:04:53 AM	66.54	44.780	1012.50	0
09:05 11:05:00 AM	66.54	44.780	1012.50	0
09:05 11:05:06 AM	66.54	44.780	1012.50	0
09:05 11:05:16 AM	66.54	44.780	1012.50	0
09:05 11:05:21 AM	66.54	44.780	1012.50	0
09:05 11:05:27 AM	66.54	44.780	1012.50	0
09:05 11:05:33 AM	66.54	44.780	1012.50	0
09:05 11:05:39 AM	66.54	44.780	1012.50	0
09:05 11:05:45 AM	66.54	44.780	1012.50	0
09:05 11:05:51 AM	66.54	44.780	1012.50	0
09:05 11:05:57 AM	66.54	44.780	1012.50	0
09:05 11:06:03 AM	66.54	44.780	1012.50	0
09:05 11:06:09 AM	66.54	44.780	1012.50	0
09:05 11:06:15 AM	66.54	44.780	1012.50	0
09:05 11:06:21 AM	66.54	44.780	1012.50	0
09:05 11:06:27 AM	66.54	44.780	1012.50	0
09:05 11:06:33 AM	66.54	44.780	1012.50	0
09:05 11:06:39 AM	66.54	44.780	1012.50	0
09:05 11:06:45 AM	66.54	44.780	1012.50	0
09:05 11:06:51 AM	66.54	44.780	1012.50	0
09:05 11:06:57 AM	66.54	44.780	1012.50	0
09:05 11:07:03 AM	66.54	44.780	1012.50	0
09:05 11:07:09 AM	66.54	44.780	1012.50	0
09:05 11:07:15 AM	66.54	44.780	1012.50	0
09:05 11:07:21 AM	66.54	44.780	1012.50	0
09:05 11:07:27 AM	66.54	44.780	1012.50	0
09:05 11:07:33 AM	66.54	44.780	1012.50	0
09:05 11:07:39 AM	66.54	44.780	1012.50	0
09:05 11:07:45 AM	66.54	44.780	1012.50	0
09:05 11:07:51 AM	66.54	44.780	1012.50	0
09:05 11:07:57 AM	66.54	44.780	1012.50	0
09:05 11:08:03 AM	66.54	44.780	1012.50	0
09:05 11:08:09 AM	66.54	44.780	1012.50	0
09:05 11:08:15 AM	66.54	44.780	1012.50	0
09:05 11:08:21 AM	66.54	44.780	1012.50	0
09:05 11:08:27 AM	66.54	44.780	1012.50	0
09:05 11:08:33 AM	66.54	44.780	1012.50	0
09:05 11:08:39 AM	66.54	44.780	1012.50	0
09:05 11:08:45 AM	66.54	44.780	1012.50	0
09:05 11:08:51 AM	66.54	44.780	1012.50	0
09:05 11:08:57 AM	66.54	44.780	1012.50	0
09:05 11:09:03 AM	66.54	44.780	1012.50	0
09:05 11:09:09 AM	66.54	44.780	1012.50	0
09:05 11:09:15 AM	66.54	44.780	1012.50	0
09:05 11:09:21 AM	66.54	44.780	1012.50	0
09:05 11:09:27 AM	66.54	44.780	1012.50	0
09:05 11:09:33 AM	66.54	44.780	1012.50	0
09:05 11:09:39 AM	66.54	44.780	1012.50	0
09:05 11:09:45 AM	66.54	44.780	1012.50	0
09:05 11:09:51 AM	66.54	44.780	1012.50	0
09:05 11:09:57 AM	66.54	44.780	1012.50	0
09:05 11:10:03 AM	66.54	44.780	1012.50	0
09:05 11:10:09 AM	66.54	44.780	1012.50	0
09:05 11:10:15 AM	66.54	44.780	1012.50	0
09:05 11:10:21 AM	66.54	44.780	1012.50	0
09:05 11:10:27 AM	66.54	44.780	1012.50	0
09:05 11:10:33 AM	66.54	44.780	1012.50	0
09:05 11:10:39 AM	66.54	44.780	1012.50	0
09:05 11:10:45 AM	66.54	44.780	1012.50	0
09:05 11:10:51 AM	66.54	44.780	1012.50	0
09:05 11:10:57 AM	66.54	44.780	1012.50	0
09:05 11:11:03 AM	66.54	44.780	1012.50	0
09:05 11:11:09 AM	66.54	44.780	1012.50	0
09:05 11:11:15 AM	66.54	44.780	1012.50	0
09:05 11:11:21 AM	66.54	44.780	1012.50	0
09:05 11:11:27 AM	66.54	44.780	1012.50	0
09:05 11:11:33 AM	66.54	44.780	1012.50	0
09:05 11:11:39 AM	66.54	44.780	1012.50	0
09:05 11:11:45 AM	66.54	44.780	1012.50	0
09:05 11:11:51 AM	66.54	44.780	1012.50	0
09:05 11:11:57 AM	66.54	44.780	1012.50	0
09:05 11:12:03 AM	66.54	44.780	1012.50	0
09:05 11:12:09 AM	66.54	44.780	1012.50	0
09:05 11:12:15 AM	66.54	44.780	1012.50	0
09:05 11:12:21 AM	66.54	44.780	1012.50	0
09:05 11:12:27 AM	66.54	44.780	1012.50	0
09:05 11:12:33 AM	66.54	44.780	1012.50	0
09:05 11:12:39 AM	66.54	44.780	1012.50	0
09:05 11:12:45 AM	66.54	44.780	1012.50	0
09:05 11:12:51 AM	66.54	44.780	1012.50	0
09:05 11:12:57 AM	66.54	44.780	1012.50	0
09:05 11:13:03 AM	66.54	44.780	1012.50	0
09:05 11:13:09 AM	66.54	44.780	1012.50	0
09:05 11:13:15 AM	66.54	44.780	1012.50	0
09:05 11:13:21 AM	66.54	44.780	1012.50	0
09:05 11:13:27 AM	66.54	44.780	1012.50	0
09:05 11:13:33 AM	66.54	44.780	1012.50	0
09:05 11:13:39 AM	66.54	44.780	1012.50	0
09:05 11:13:45 AM	66.54	44.780	1012.50	0
09:05 11:13:51 AM	66.54	44.780	1012.50	0
09:05 11:13:57 AM	66.54	44.780	1012.50	0
09:05 11:14:03 AM	66.54	44.780	1012.50	0
09:05 11:14:09 AM	66.54	44.780	1012.50	0
09:05 11:14:15 AM	66.54	44.780	1012.50	0
09:05 11:14:21 AM	66.54	44.780	1012.50	0
09:05 11:14:27 AM	66.54	44.780	1012.50	0
09:05 11:14:33 AM	66.54	44.780	1012.50	0
09:05 11:14:39 AM	66.54	44.780	1012.50	0
09:05 11:14:45 AM	66.54	44.780	1012.50	0
09:05 11:14:51 AM	66.54	44.780	1012.50	0
09:05 11:14:57 AM	66.54	44.780	1012.50	0
09:05 11:15:03 AM	66.54	44.780	1012.50	0
09:05 11:15:09 AM	66.54	44.780	1012.50	0
09:05 11:15:15 AM	66.54	44.780	1012.50	0
09:05 11:15:21 AM	66.54	44.780	1012.50	0
09:05 11:15:27 AM	66.54	44.780	1012.50	0
09:05 11:15:33 AM	66.54	44.780	1012.50	0
09:05 11:15:39 AM	66.54	44.780	1012.50	0
09:05 11:15:45 AM	66.54	44.780	1012.50	0
09:05 11:15:51 AM	66.54	44.780	1012.50	0
09:05 11:15:57 AM	66.54	44.780	1012.50	0
09:05 11:16:03 AM	66.54	44.780	1012.50	0
09:05 11:16:09 AM	66.54	44.780	1012.50	0
09:05 11:16:15 AM	66.54	44.780	1012.50	0
09:05 11:16:21 AM	66.54	44.780	1012.50	0
09:05 11:16:27 AM	66.54	44.780	1012.50	0
09:05 11:16:33 AM	66.54	44.780	1012.50	0
09:05 11:16:39 AM	66.54	44.780	1012.50	0
09:05 11:16:45 AM	66.54	44.780	1012.50	0
09:05 11:16:51 AM	66.54	44.780	1012.50	0
09:05 11:16:57 AM	66.54	44.780	1012.50	0
09:05 11:17:03 AM	66.54	44.780	1012.50	0
09:05 11:17:09 AM	66.54	44.780	1012.50	0
09:05 11:17:15 AM	66.54	44.780	1012.50	0
09:05 11:17:21 AM	66.54	44.780	1012.50	0
09:05 11:17:27 AM	66.54	44.780	1012.50	0
09:05 11:17:33 AM	66.54	44.780	1012.50	0
09:05 11:17:39 AM	66.54	44.780	1012.50	0
09:05 11:17:45 AM	66.54	44.780	1012.50	0
09:05 11:17:51 AM	66.54	44.780	1012.50	0
09:05 11:17:57 AM	66.54	44.780	1012.50	0
09:05 11:18:03 AM	66.54	44.780	1012.50	0
09:05 11:18:09 AM	66.54	44.780	1012.50	0
09:05 11:18:15 AM	66.54	44.780	1012.50	0
09:05 11:18:21 AM	66.54	44.780	1012.50	0
09:05 11:18:27 AM	66.54	44.780	1012.50	0
09:05 11:18:33 AM	66.54	44.780	1012.50	0
09:05 11:18:39 AM	66.54	44.780	1012.50	0
09:05 11:18:45 AM	66.54	44.780	1012.50	0
09:05 11:18:51 AM	66.54	44.780	1012.50	0
09:05 11:18:57 AM	66.54	44.780	1012.50	0
09:05 11:19:03 AM	66.54	44.780	1012.50	0
09:05 11:19:09 AM	66.54	44.780	1012.50	0
09:05 11:19:15 AM	66.54	44.780	1012.50	0
09:05 11:19:21 AM	66.54	44.780	1012.50	0
09:05 11:19:27 AM	66.54	44.780	1012.50	0
09:05 11:19:33 AM	66.54	44.780	1012.50	0
09:05 11:19:39 AM	66.54	44.780	1012.50	0
09:05 11:19:45 AM	66.54	44.780	1012.50	0
09:05 11:19:51 AM	66.54	44.780	1012.50	0
09:05 11:19:57 AM	66.54	44.780	1012.50	0
09:05 11:20:03 AM	66.54	44.780	1012.50	0
09:05 11:20:09 AM	66.54	44.780	1012.50	0
09:05 11:20:15 AM	66.54	44.780	1012.50	0
09:05 11:20:21 AM	66.54	44.780	1012.50	0
09:05 11:20:27 AM	66.54	44.780	1012.50	0
09:05 11:20:33 AM	66.54	44.780	1012.50	0
09:05 11:20:39 AM	66.54	44.780	1012.50	0
09:05 11:20:45 AM	66.54	44.780	1012.50	0
09:05 11:20:51 AM	66.54	44.780	1012.50	0
09:05 11:20:57 AM	66.54	44.780	1012.50	0
09:05 11:21:03 AM	66.54	44.780	1012.50	0
09:05 11:21:09 AM	66.54	44.780	1012.50	0
09:05 11:21:15 AM	66.54	44.780	1012.50	0
09:05 11:21:21 AM	66.54	44.780	1012.50	0
09:05 11:21:27 AM	66.54	44.780	1012.50	0
09:05 11:21:33 AM	66.54	44.780	1012.50	0
09:05 11:21:				



Replacement Probes with Calibration Certificate available, just add: "- CAL-3-HU" or "- CAL-3-P" or "- CAL-3-HU-P-T"

No need to take your unit out of service for routine calibration. Order a calibrated probe instead.



iDRN-PS-1000

- 24 Vdc supply
- Switching power supply powers up to 7 units



To Order Visit omega.com/ibtx_ibthx for Pricing and Details

Model No.	Description
iBTX-SD	iServer MicroServer™ for barometric pressure and temperature, LCD, 2 GB SD flash memory card, 2-relay alarm and battery backup, with universal AC power adaptor
iBTX-W	iServer MicroServer™ for barometric pressure and temperature, with AC power adaptor
iBTHX-W	iServer MicroServer™ for barometric pressure, temperature, humidity and dew point, with AC power adaptor
	* Standard wand probe, cable 152 mm (6") with DB9 connector (no entry required)
	-5 Industrial 5" probe, cable 3 m (10') with DB9 connector (substitution for wand probe)
Accessories	
iBTP-W-6	Wand probe, cable 152 mm (6") with DB9 connector (barometric pressure/temperature)
iBTHP-W-6	Wand probe, cable 152 mm (6") with DB9 connector (barometric pressure/temperature/humidity)
iBTP-5-DB9	Industrial 137 mm (5") probe, cable 3 m (10') with DB9 connector (barometric pressure/temperature)
iBTHP-5-DB9	Industrial 137 mm (5") probe, cable 3 m (10') with DB9 connector (barometric pressure/temp/humidity)
DB9-CA-3-2	Extension cable, 0.9 m (3') with DB9 connector
Model No.	Description
iBTX-D	iServer industrial MicroServer™ for barometric pressure and temp; industrial probe 137 mm (5"), cable 3 m (10'), stripped wire leads; DIN rail mount
iBTHX-D	iServer industrial MicroServer™ for barometric pressure, temp, humidity and dew point; industrial probe 137 mm (5"), cable 3 m (10'), stripped wire leads; DIN rail mount
Accessories	
iBTP-5	Industrial probe 137 mm (5"), cable 3 m (10') with stripped wire leads; barometric pressure/temp
iBTHP-5	Industrial probe 137 mm (5"), cable 3 m (10') with stripped wire leads; bar, pressure/temp/humidity
iDRN-PS-1000	Power supply (switching), 95 to 240 Vac input, 24 Vdc output @ 850 mA (powers up to 7 units)
Common Accessories	
CAL-3-HU	NIST-traceable calibration certificate, 3 humidity points: 25%, 50%, 75%, temp 25°C (for new units)
CAL-3-HU-P-T	NIST-traceable calibration certificate, 3 humidity, barometric pressure and temp points (for new units)
CAL-3-P	NIST-traceable calibration certificate, 3 barometric pressure points, temp 25°C (for new units)
* -CAL-3-HU	Calibrated replacement probe, and NIST traceable calibration certificate (for * insert probe type)
* -CAL-3-HU-P-T	Calibrated replacement probe, and NIST traceable calibration certificate (for * insert probe type)
* -CAL-3-P	Calibrated replacement probe, and NIST traceable calibration certificate (for * insert probe type)
CT485B-CAL-KIT	Calibration kit, 33% and 75% RH standards
iP-PCI-10P	Porous polyethylene industrial probe cap for wet environments, 10 caps per pack
iP-SC	Porous stainless steel probe cap, 5 μm porosity, for dusty and pressurized (<35 psi) environments

Ordering Examples: **iBTHX-D**, DIN rail mount industrial MicroServer™ for barometric pressure, temperature, humidity and dew point, with **iDRN-PS-1000**, power supply.

iBTX-W, bracket mounted iServer Microserver™ for barometric pressure and temperature, with **DB9-CA-3-2**, extension cable.

For calibrated replacement probe, with certificate: **iBTHP-W-6-CAL-3-HU**.